

# QAsh 1800

Express Microwave Ashing System



Efficient Ashing of Carbon Rich Samples Using Controlled Air Flow



Food

Rubber



Fuel Oil



Paper



Feed



Activated Carbon



Polymers



Wood



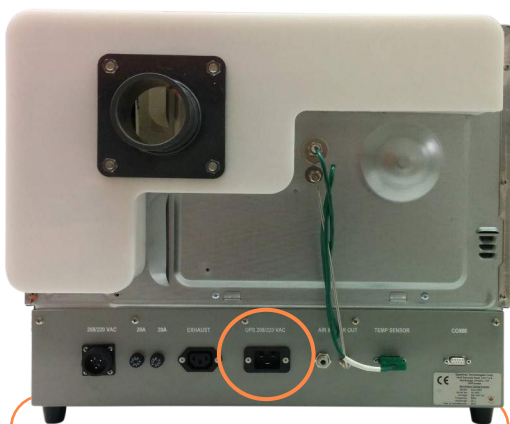
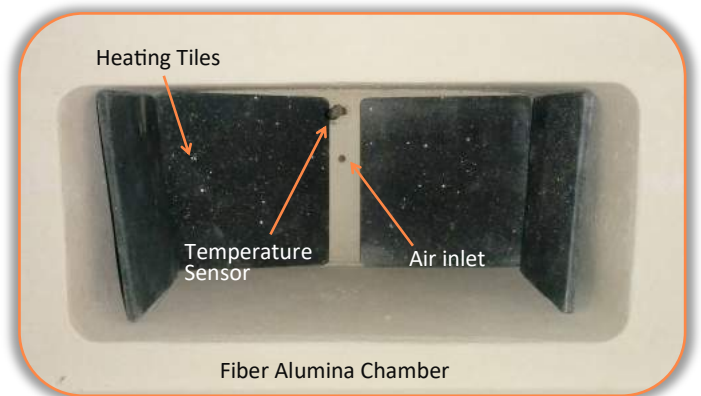


- LED Bar temperature display
- Attains 1000°C in 25 minutes
- 1800 Watts of microwave energy
- 9 - 50 ml crucibles in one batch

## Air Inlet within Heating Zone

QAsh software controlled air inlet provides the user with the capability to expedite the ashing and cooling process. Additionally, it allows the system to carry out the heating in an inert environment.

QAsh employs a heavy duty R Type Thermocouple which increases durability and ensures accurate temperature measurements over the complete working range.



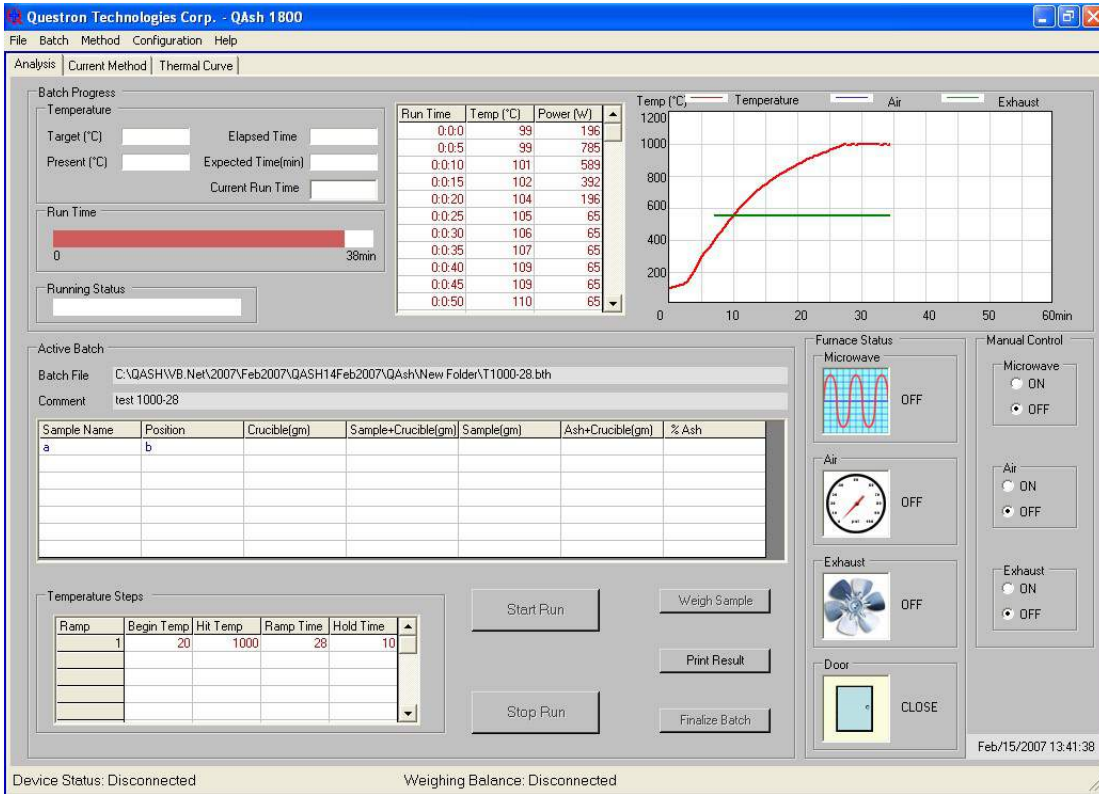
Connection for an UPS to continue essential functions in case of a power failure



Corrosion proof, external exhaust blower efficiently removes fumes and shortens cooling time

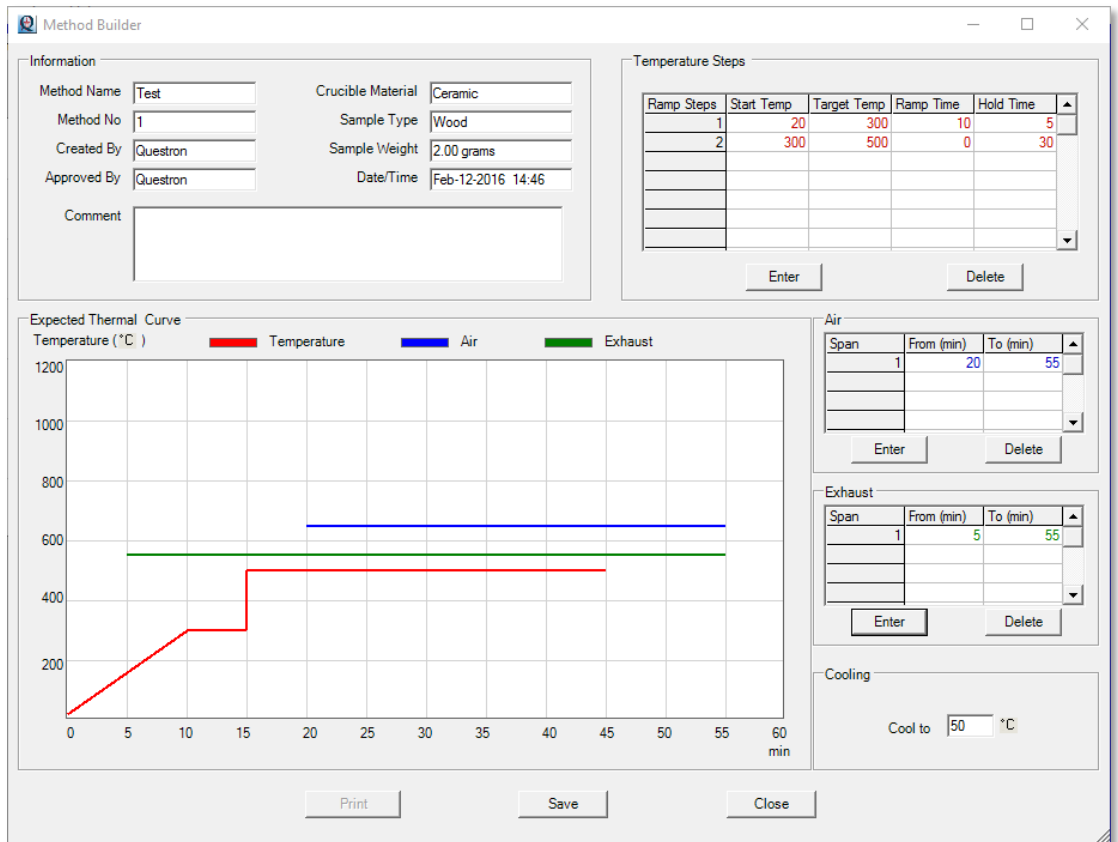


## QAsh 1800 Software



- PC controlled QAsh software avoids the need for any extra hardware.
- Operational data can be stored and printed using any regular printer.
- QAsh software provides real-time status of ashing method and performance.

- Intuitive method creation allows for multiple heating steps including control of air flow.
- Methods are saved on the computer for future viewing or printing.
- QAsh may be used with an analytical balance to import the crucible weight.



## QAsh Time Savings (5 gm sample)

Material	Conventional (Hr:Mn)	Microwave (Hr:Mn)	Time Saved
Butyl Rubber	3:30	0:45	78%
Carbon Black	16:00	1:20	92%
Coal	4:00	0:45	81%
Egg Yolks	4:00	0:30	87%
Animal Feed	2:10	0:15	88%
Graphite Powder	4:00	0:35	85%
Lactose	16:00	0:30	97%
Oil Sludge	1:00	0:30	50%
Paper	1:00	0:15	75%
Pet Food	5:20	0:45	86%
Pet Food (dry)	1:30	0:25	72%
Polyester	8:00	1:00	87%
Polyethylene	2:15	0:40	70%
Paraffin	7:00	1:35	75%
Waste Sludge	1:00	0:25	58%

## Specifications

**Microwave Power :** 1800 watts (Frequency 2450 MHz)

**Temperature Sensor :** R-Type Thermocouple

**Temperature range :** 20°C - 1200°C ±0.5%

**Utilities :** 208 VAC, 60 Hz, 15 Amps or  
220 VAC, 50 Hz, 15 Amps

**Computer :** Windows® 10 to XP™ operating system  
1 COM port (for QAsh)  
1 USB / Com port (for Analytical Balance)

**Operating ambient temperature :** 5°C - 40°C

**Operating ambient Humidity :** 10% - 80%

**Exhaust Flow :** 150 CFM



Eliminate a transfer step by using the QBlock to carry out acid digestions using the same crucible as the QAsh.

**System** 55 x 63 x 46 cm (22 x 25 x 18 in) (W x D x H) (160 L)

**Cavity** 36 x 41 x 27 cm (14 x 16 x 10.5 in) (W x D x H) (40 L)

**Ceramic Chamber** 22 x 23 x 10 cm (8.5 x 9 x 4 in) (W x D x H)  
( 5.06 L)

**Weight** 35 kg (77 lbs)

### Shipping Dimensions & Weight

76 x 90 x 65 cm (30 X 35 X 25 in)

100 kg (220 lbs)



**Questron Technologies Corp.**

6660 Kennedy Road, Unit 14A Mississauga, ON L5T 2M9 Canada  
Tel: 905.362.1225 — info@QTechCorp.com — www.QTechCorp.com



Toll Free: 1.844.363.1223